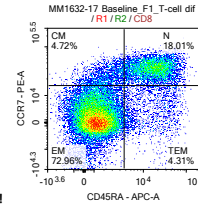
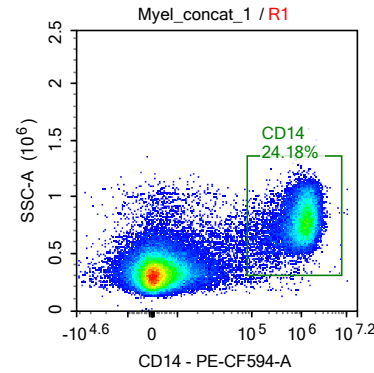
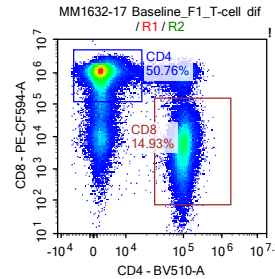
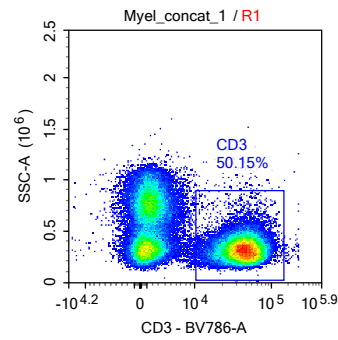
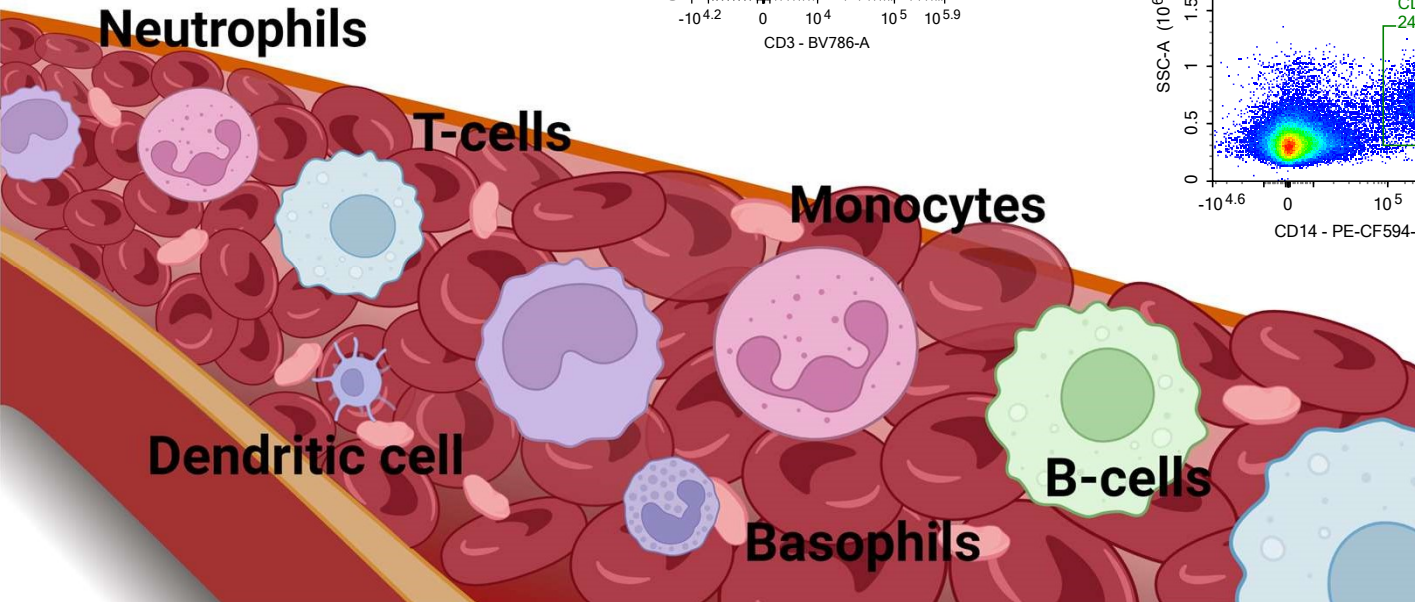


Cellular responses to immune therapy in MM patients investigated machine learning techniques

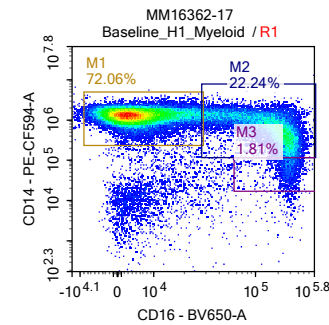
Flashtalk DCCC

Anders H. Kverneland
MD, postdoc

Immune monitoring

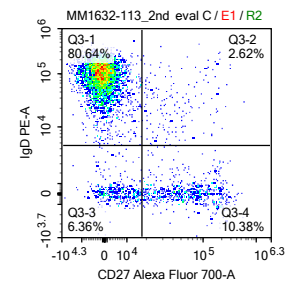
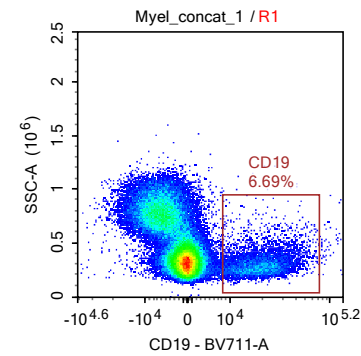


CD27
CD28
CD37
CD39
HLA-DR
...

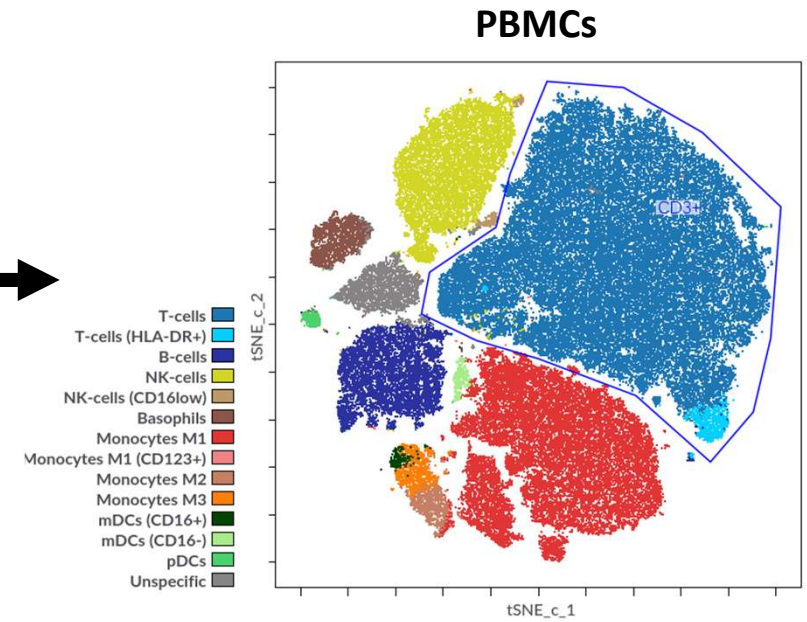
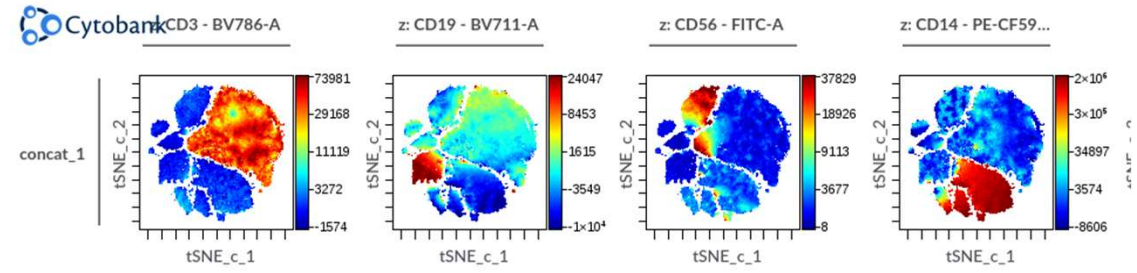
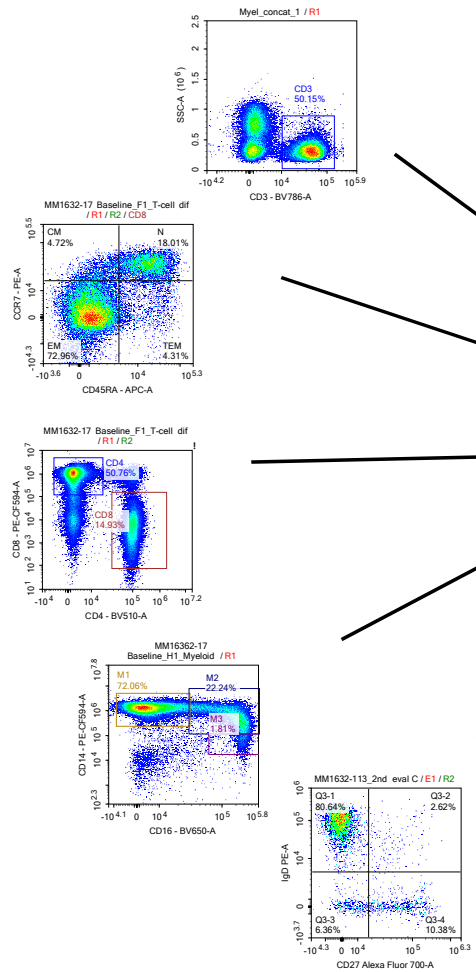


CD64
HLA-DR

CD34
CD38
IgM

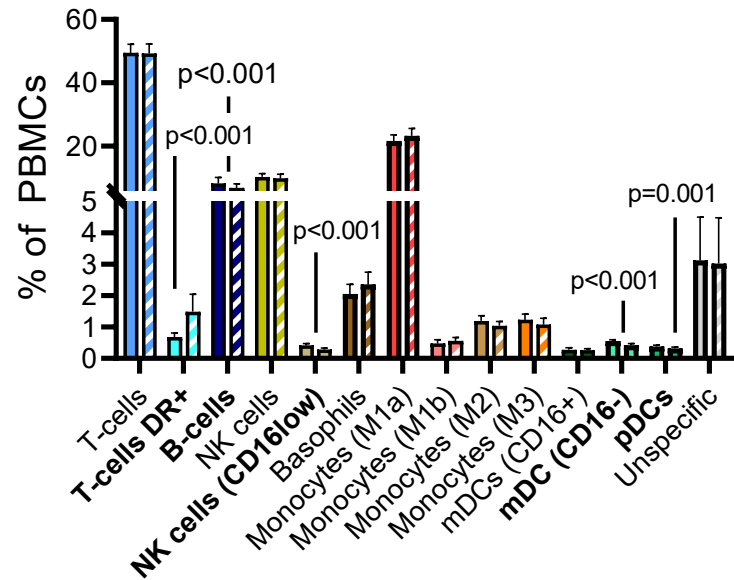


Machine learning

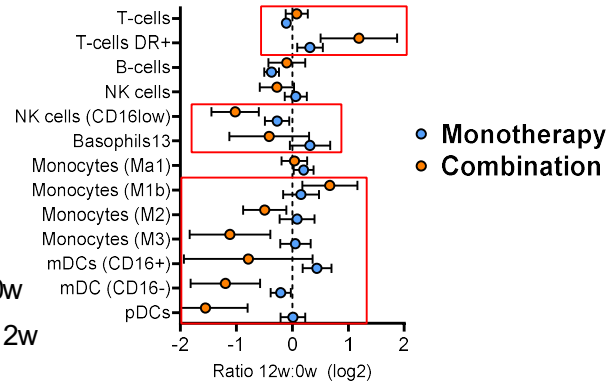


Immune monitoring

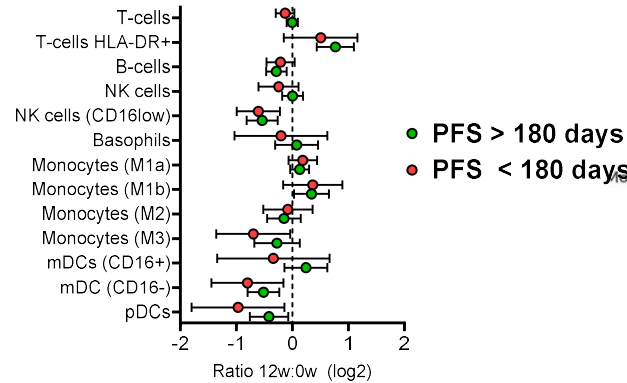
PBMC changes after immune therapy



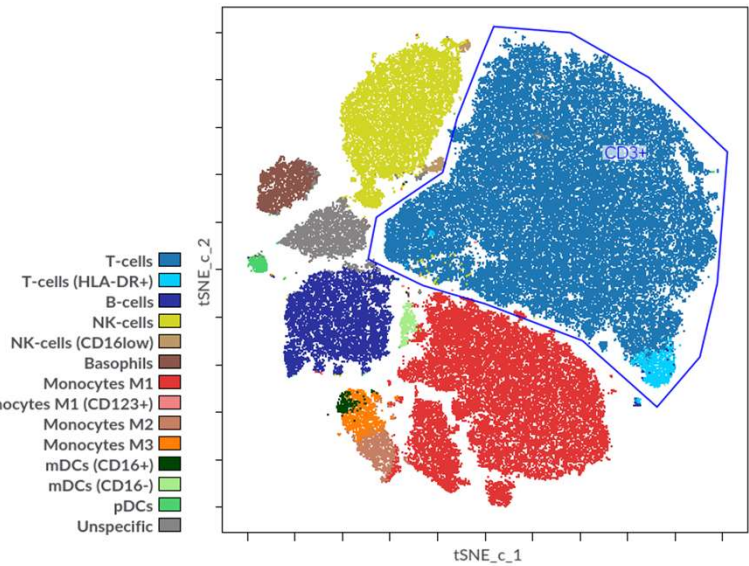
Monotherapy vs. combination therapy



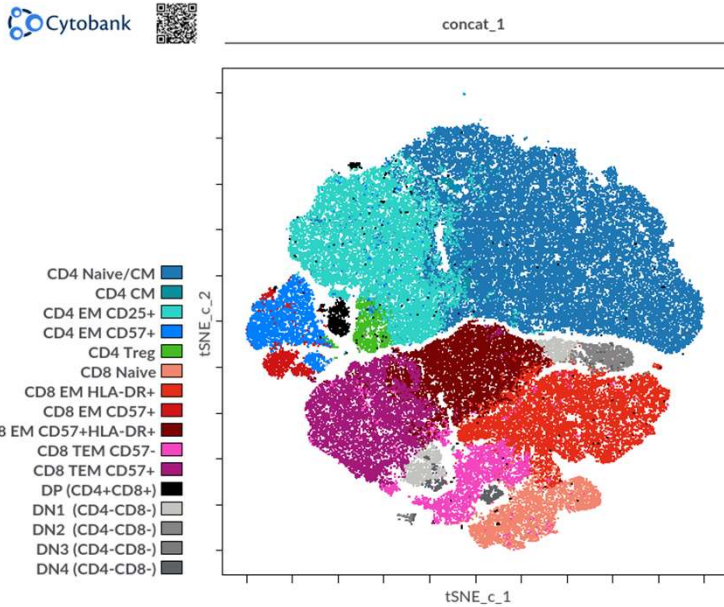
Responder vs non-responder



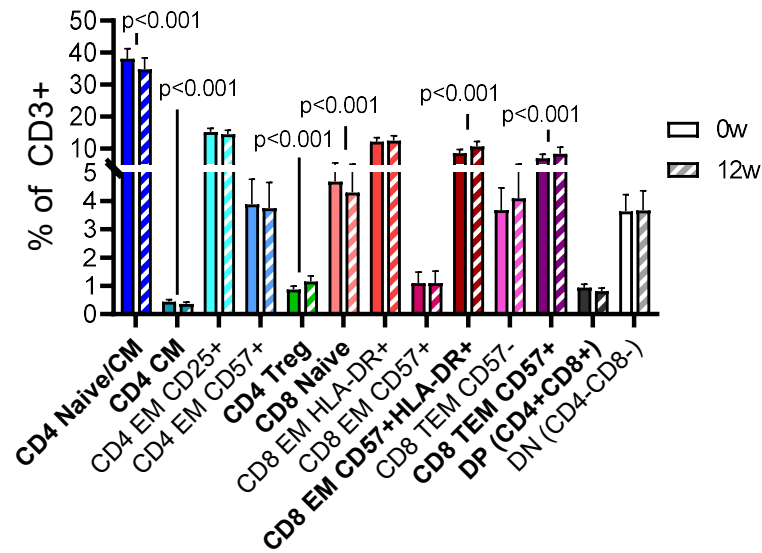
PBMCs



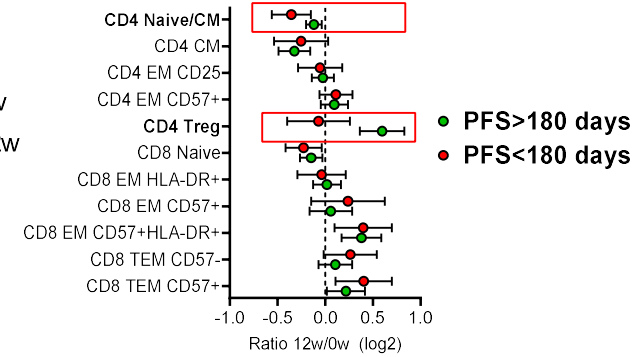
T-cells



T-cell changes after immune therapy



Responder vs. non-responder



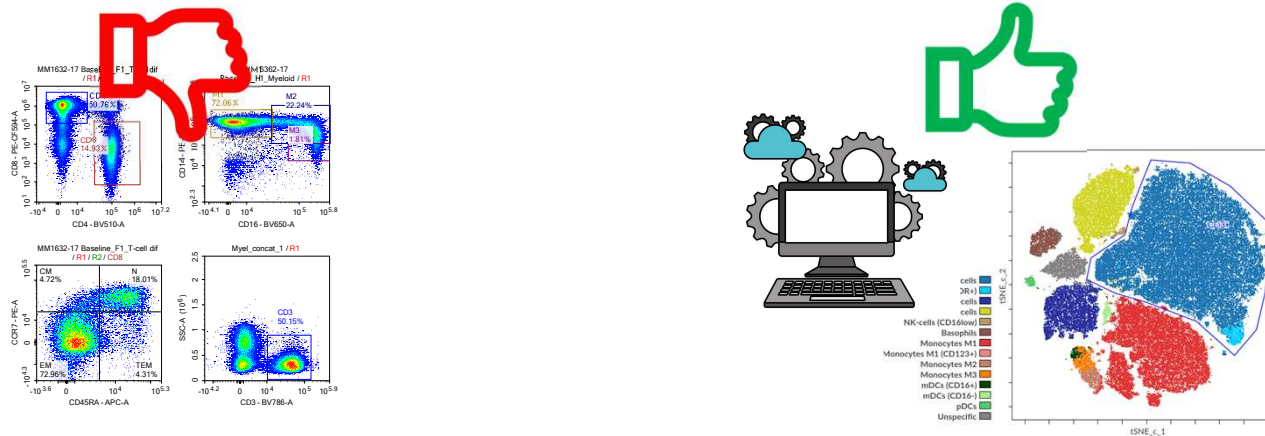
Conclusions

Machine learning = tool to analyse complex data

Flow cytometry with multiple parameters = **complex data**

Immune therapy has multiple effects on the peripheral immune system.

*Clinical response to therapy can be linked to **CD4 T-cells changes***



Acknowledgements

CCIT

Inge Marie Svane
Frederikke Strauss-Hansen
Marco Donia
Rebecca Jurlander
Joachim Stoltenborg
Inge Mansfield Noringriis
Eva Ellebæk

Funding

Novo Nordisk Foundation

